



ABACO MACHINES OPERATION MANUAL RATCHET SEAM SETTER M1



ABACO MACHINES USA, INC.
(EAST COAST OPERATION)

505 Edwards Court
Newport News, VA 23608

Tel: 757-877-5243
Fax: 757-877-5863

Email: sales@abacomachines.com
Website: www.abacomachines.com

ABACO MACHINES USA, INC.
(WEST COAST OPERATION)

20224 S. Normandie Ave.
Torrance, CA 90502

Tel: 310-532-0366
Fax: 310-532-0499

Email: sales@abacomachines.com
Website: www.abacomachines.com

ABACO MACHINES
INTERNATIONAL

Unit 4/34-36 Fairfield Street
Fairfield N.S.W. 2163 Australia

Tel: 61-2-9632-4990
Fax: 61-2-9632-1510

Email: abacomachines@abaco.com.au
Website: www.abaco.com.au

The Abaco Ratchet Seam Setter provides a quick and easy solution for accurately and safely positioning countertops. The tool is lightweight and simple to use.

Positioning Countertops

1. Position the two suction pads on opposite sides of the joint with the ratchet handle side on the slab intended to be moved. The footpad should be positioned on the slab intended to remain stationary.
2. Tighten the center knobs on both suction cups to secure to the countertop.
3. Turn the footpad adjustment knob clockwise until the opposite slab lifts slightly.

CAUTION: To prevent scratches to the surface of the countertop, it is recommended that a protective spacer be placed under the pad.

4. Set the ratchet to the desired action; either to push the slab away or pull the slab to tighten the joint. Operate the ratchet to move the slab into the desired position.
5. To release the Abaco Ratchet Seam Setter, turn the footpad adjustment knob counterclockwise to raise the foot approximately ¼" (6mm) off the countertop.
6. Turn both center knobs counterclockwise on the suction cups until they disengage completely.
- 7.

Aligning Joints Vertically

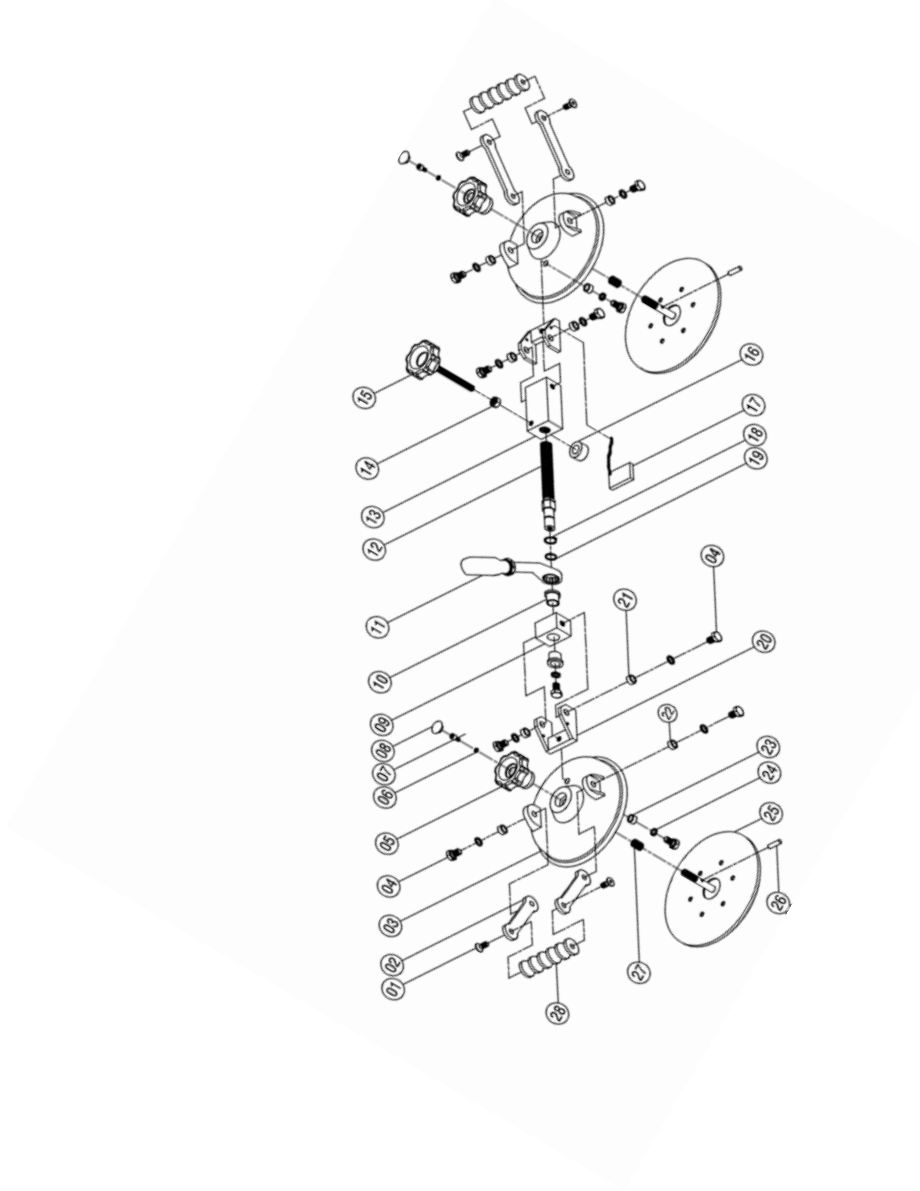
1. Position the two suction cups on opposite sides of the joint. For best results, the center footpad should be entirely on the higher countertop.
2. Tighten center knobs on both suction cups to secure to the surface.
3. To check for equal heights, slide a straight edge across the joint. Adjust the footpad adjustment knob to raise or lower the piece until no lip is detected.
4. Shim the low piece as required.
5. To release the Abaco Ratchet Seam Setter, turn the footpad adjustment knob counterclockwise to raise the foot approximately ¼" (6mm) off the surface.
6. Turn both center knobs counterclockwise on both suction cups until they disengage completely.

Specifications

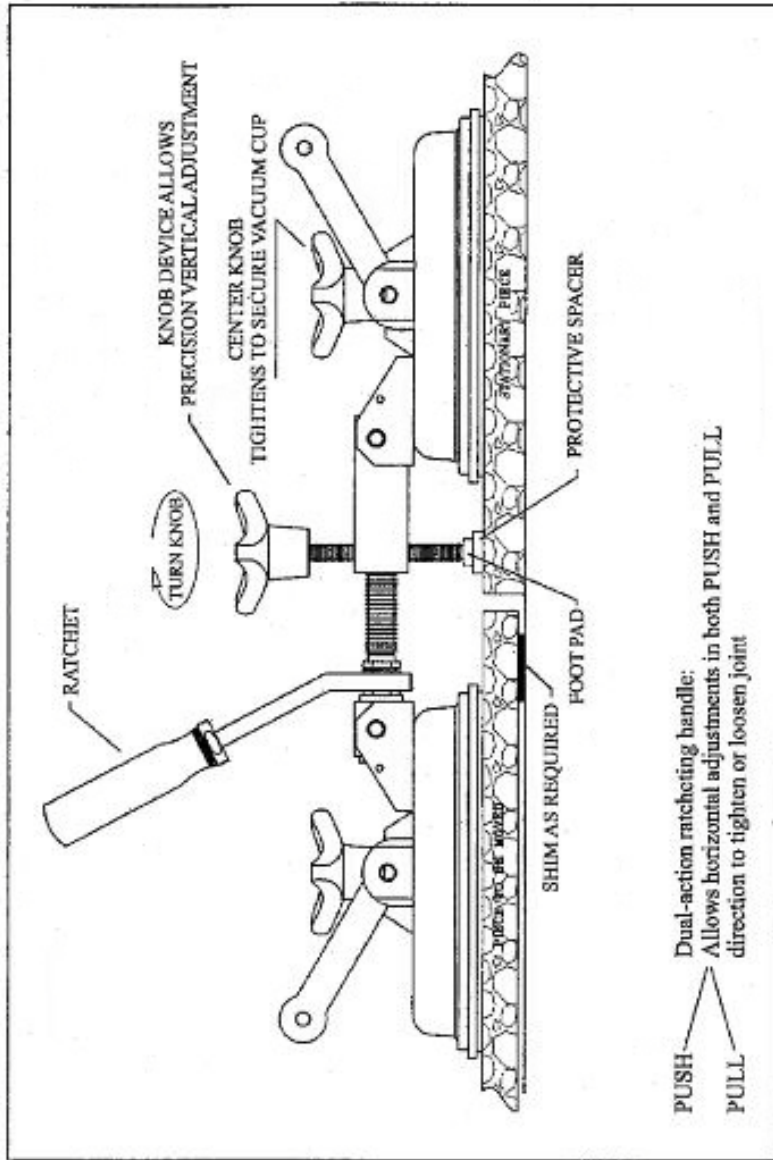
Holding Capacity: 132 lbs (60kg)

Dimensions L x W x H: 20-23 x 8⁵/₈ x 10" 510-584 x 220 x 254mm)

Diameter of Suction Cups: 8" (203mm)



Code	Description	Qty.
1	Pissle Pin	2
2	Vacuum Pad	2
3	M10 Socket Head	14
4	Washer $\varnothing 10$	14
5	Trailing Arm	4
6	Handle	2
7	Suction Cup	2
8	Spacer A	4
9	Center Knob	2
10	Washer $\varnothing 6$	2
11	M6 Socket Head	2
12	Spacer B	4
13	Swivel Bracket	2
14	M8 Socket Head	1
15	Washer $\varnothing 8$	1
16	Brass Sleever	2
17	Anchor Block	1
18	Ratchet	1
19	Circlip	1
20	Arcme Thread	1
21	Pulling Block	1
22	Level Adjusting Knob	1
23	Spacer B	2
24	Compression Spring	2
25	Footing	1
26	Protective Spacer	1





ABACO MACHINES

WARRANTY CERTIFICATE

In order to validate the warranty, it is mandatory to return the attached **Warranty Certificate**, duly completed, within **eight (8)** days after purchase.

PERIOD

The warranty starts from the date of purchase (date on the distributor's invoice).

Warranty is valid for a period of **six (6) months**.

WARRANTY

This warranty is limited to the replacement of parts recognized as defective by Abaco (excluding worn components and consumables).

The manufacturer is not responsible for any direct or indirect, material or immaterial damages caused to persons or property by failure of the machine or the non-operation of the machine.

WARRANTY CONDITIONS

To benefit from the warranty, it is mandatory to return the Warranty Certificate (attached below), duly completed, to Abaco within eight days after purchase.

In case of failure of the machine during the warranty period, our After –Sales Service Department will inform you of the appropriate method of dealing with your claim and advise you of your nearest approved service center.

EXCLUSIONS

Warranty does not apply for damages or failures caused by:

- Incorrect use, misuse, error in transportation, handling or maintenance.
- Use of non-genuine parts or accessories.
- Use of incorrect specifications i.e. glass sheet thickness.

